



Professional streetlight luminaire for LED light sources. Luminaire with twilight sensor.

#### TECHNICAL DATA

**Mounting:** on pillar  $\varnothing 60/76$ mm, on outriggers  $\varnothing 60/76$ mm

**Body:** high pressure die-cast aluminum

**Lateral Surface Wind Exposed:** 0.054 m<sup>2</sup>

**Colour:** gray, graphite

**Diffuser:** tempered glass

#### ELECTRICAL DATA

**Power supply efficiency:** >93%

**Power:** 220-240V 50/60Hz

**Includes light source:** yes

**Type of equipment:** ED, NEMA socket, twilight sensor

**Electrical connection:** max 3x2,5 mm<sup>2</sup> wire, max 2x2,5 mm<sup>2</sup> wire

#### OPTICAL DATA

**Light distribution:** asymmetric

**Way of lighting:** direct

**Type of optic:** 01 - for freeways, 02 - for express roads, 03 - for local roads, 04 - for town roads, 05 - for residential area roads, 07 - for area lighting, 08 - for town and local roads

**ULOR / DLOR:** 0% / 100%

#### GENERAL DATA

**Lifetime (L80B10):** 100 000 h

**Available on request:** DALI, DIM 1..10V, LLOC, 10kV surge protection, NTC

**Additional information:** Tilt adjustment jump: 5°, knife switch (for protection class I), access to the driver chamber without the use of tools. The possibility of using one or more power supplies in the luminaire.

**Other remarks:** the pole is not part of the luminaire

**Warranty:** 5 years

**Application:** freeways, express roads, local roads, town roads, residential area roads, area lighting



Code	Protection Class	Luminaire power [W]	Lumen luminaire [lm]	Efficacy [lm/W]	Colour temperature [K]	CRI/Ra	Operating temperature range [°C]
<b>Type: Regulation 0° ... +15°</b>							
13019X.5L05.1X.X	I	105	12400	118	4000	>70	-40 ... +50
13019X.5L05.2X.X	II	103	12400	120	4000	>70	-40 ... +50
13019X.5L06.1X.X	I	105	12400	118	5700	>70	-40 ... +50
13019X.5L06.2X.X	II	103	12400	120	5700	>70	-40 ... +50
13019X.5L08.1X.X	I	155	18750	121	4000	>70	-40 ... +45
13019X.5L08.2X.X	II	153	18750	123	4000	>70	-40 ... +45
13019X.5L09.1X.X	I	155	18750	121	5700	>70	-40 ... +45
13019X.5L09.2X.X	II	153	18750	123	5700	>70	-40 ... +45
13019X.5L11.1X.X	I	200	22900	114	4000	>70	-40 ... +35
13019X.5L12.1X.X	I	200	22900	114	5700	>70	-40 ... +35
<b>Type: Regulation -15° ... 0°</b>							
13019X.5L05.1X1.X	I	105	12400	118	4000	>70	-40 ... +50
13019X.5L05.2X1.X	II	103	12400	120	4000	>70	-40 ... +50
13019X.5L06.1X1.X	I	105	12400	118	5700	>70	-40 ... +50
13019X.5L06.2X1.X	II	103	12400	120	5700	>70	-40 ... +50
13019X.5L08.1X1.X	I	155	18750	121	4000	>70	-40 ... +45
13019X.5L08.2X1.X	II	153	18750	123	4000	>70	-40 ... +45
13019X.5L09.1X1.X	I	155	18750	121	5700	>70	-40 ... +45
13019X.5L09.2X1.X	II	153	18750	123	5700	>70	-40 ... +45

Luminous flux tolerance +/- 10%.

Power tolerance +/- 5%.

Lighting beam, light intensity distribution and light efficiency were examined in accordance with the EN ISO 17025:2005 norm for EN13032 norm series and the LM-79 norm.

Please note that the standard luminaire is not intended for use in an environment with a high degree of salinity. If it is required to adapt the luminaire to work in such an environment, please contact our Sales Department to confirm the possibility of using an additional protective coating.

Date of issue: 11-6-2018

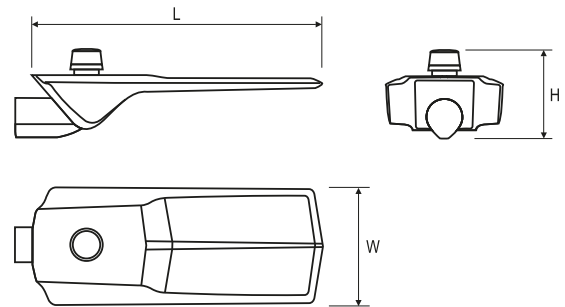
The LUG Company reserves right to introduce any construction changes and improvements into the lighting luminaires

Code	Protection Class	Luminaire power [W]	Lumen luminaire [lm]	Efficacy [lm/W]	Colour temperature [K]	CRI/Ra	Operating temperature range [°C]
<b>Type: Regulation -15° ... 0°</b>							
13019X.5L11.1X1.X	I	200	22900	114	4000	>70	-40 ... +35
13019X.5L12.1X1.X	I	200	22900	114	5700	>70	-40 ... +35

13019	□	.5L05.1	□	.986
				Type of luminaires
				986 Luminaire with twilight sensor
				Type of optic
				1 O1 - for freeways
				2 O2 - for express roads
				3 O3 - for local roads
				4 O4 - for town roads
				5 O5 - for residential area roads
				7 O7 - for area lighting
				8 O8 - for town and local roads
				Colour
	2	□		gray
	5	■		graphite

Code	Dimensions [mm] LWH	Pallet quantity	Quantity in package	Net weight [kg]
<b>Type: Regulation 0° ... +15°</b>				
13019X.5L05.1X.X	730 295 217	24	1	11.0
13019X.5L05.2X.X	730 295 217	24	1	11.0
13019X.5L06.1X.X	730 295 217	24	1	11.0
13019X.5L06.2X.X	730 295 217	24	1	11.0
13019X.5L08.1X.X	730 295 217	24	1	11.2
13019X.5L08.2X.X	730 295 217	24	1	11.2
13019X.5L09.1X.X	730 295 217	24	1	11.2
13019X.5L09.2X.X	730 295 217	24	1	11.2
13019X.5L11.1X.X	730 295 217	24	1	12.4
13019X.5L12.1X.X	730 295 217	24	1	12.4

<b>Type: Regulation -15° ... 0°</b>				
13019X.5L05.1X1.X	730 295 217	24	1	11.0
13019X.5L05.2X1.X	730 295 217	24	1	11.0
13019X.5L06.1X1.X	730 295 217	24	1	11.0
13019X.5L06.2X1.X	730 295 217	24	1	11.0
13019X.5L08.1X1.X	730 295 217	24	1	11.2
13019X.5L08.2X1.X	730 295 217	24	1	11.2
13019X.5L09.1X1.X	730 295 217	24	1	11.2
13019X.5L09.2X1.X	730 295 217	24	1	11.2
13019X.5L11.1X1.X	730 295 217	24	1	12.4
13019X.5L12.1X1.X	730 295 217	24	1	12.4



Luminous flux tolerance +/- 10%.  
Power tolerance +/- 5%.

Lighting beam, light intensity distribution and light efficiency were examined in accordance with the EN ISO 17025:2005 norm for EN13032 norm series and the LM-79 norm.

Please note that the standard luminaire is not intended for use in an environment with a high degree of salinity. If it is required to adapt the luminaire to work in such an environment, please contact our Sales Department to confirm the possibility of using an additional protective coating.

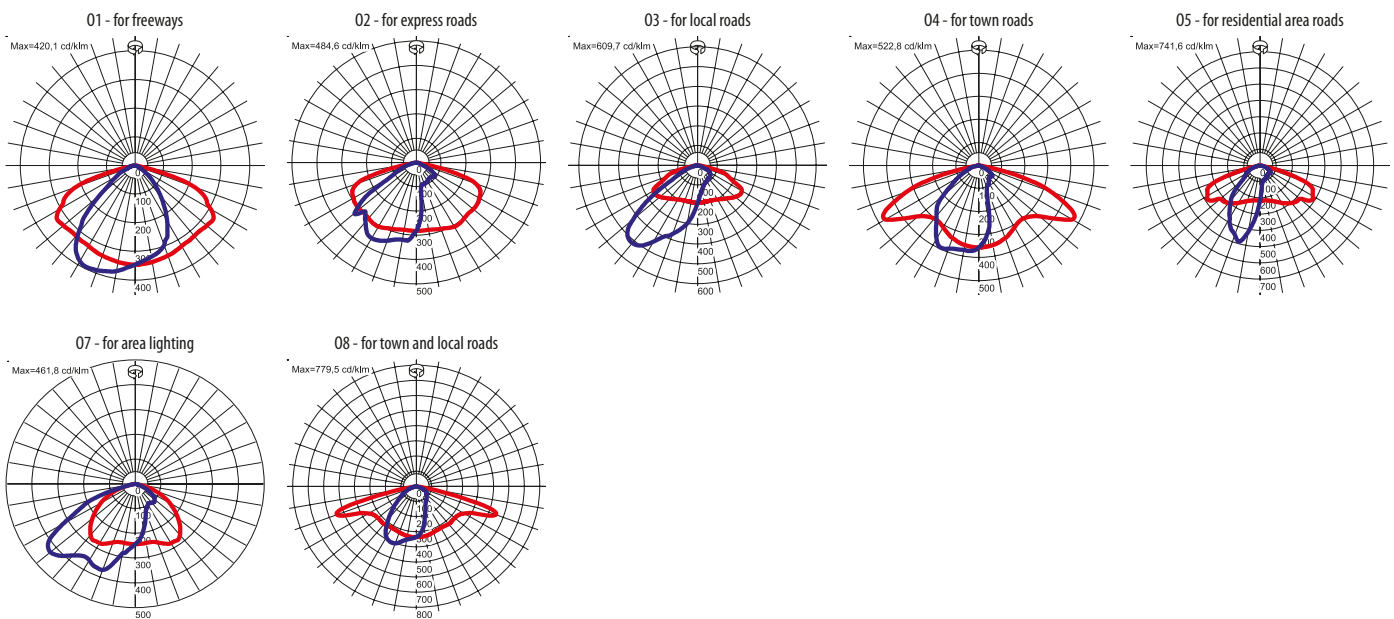
Date of issue: 11-6-2018

The LUG Company reserves right to introduce any construction changes and improvements into the lighting luminaires

## OTHER PICTURES



## LIGHT BEAM CURVES



Luminous flux tolerance +/- 10%.

Power tolerance +/- 5%.

Lighting beam, light intensity distribution and light efficiency were examined in accordance with the EN ISO 17025:2005 norm for EN13032 norm series and the LM-79 norm.

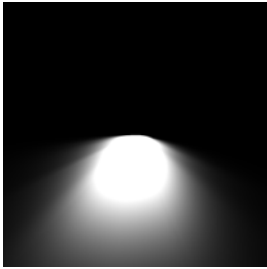
Please note that the standard luminaire is not intended for use in an environment with a high degree of salinity. If it is required to adapt the luminaire to work in such an environment, please contact our Sales Department to confirm the possibility of using an additional protective coating.

Date of issue: 11-6-2018

The LUG Company reserves right to introduce any construction changes and improvements into the lighting luminaires

## WAY OF LIGHTING

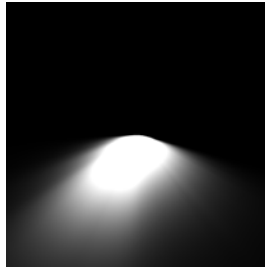
01 - for freeways



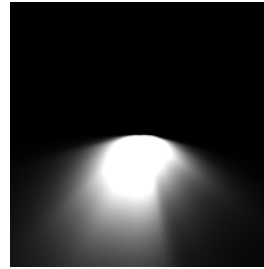
02 - for express roads



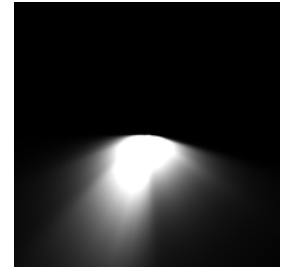
03 - for local roads



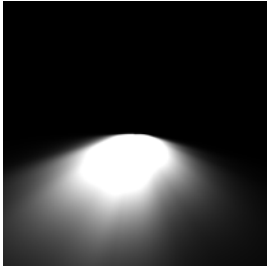
04 - for town roads



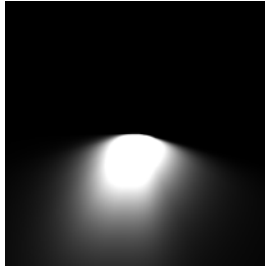
05 - for residential area roads



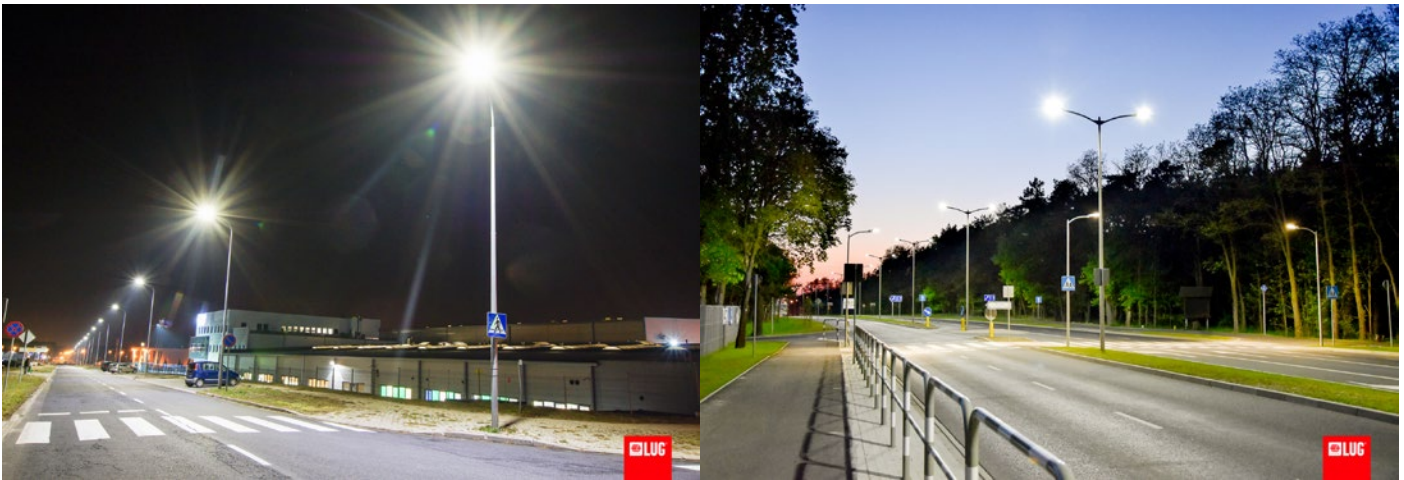
07 - for area lighting



08 - for town and local roads



## OTHER PROJECTS



Gorzowska Street, Zielona Gora, Poland

Zjednoczenia Avenue, Zielona Góra, Poland

Luminous flux tolerance +/- 10%.  
Power tolerance +/- 5%.

Lighting beam, light intensity distribution and light efficiency were examined in accordance with the EN ISO 17025:2005 norm for EN13032 norm series and the LM-79 norm.

Please note that the standard luminaire is not intended for use in an environment with a high degree of salinity. If it is required to adapt the luminaire to work in such an environment, please contact our Sales Department to confirm the possibility of using an additional protective coating.

Date of issue: 11-6-2018

The LUG Company reserves right to introduce any construction changes and improvements into the lighting luminaires